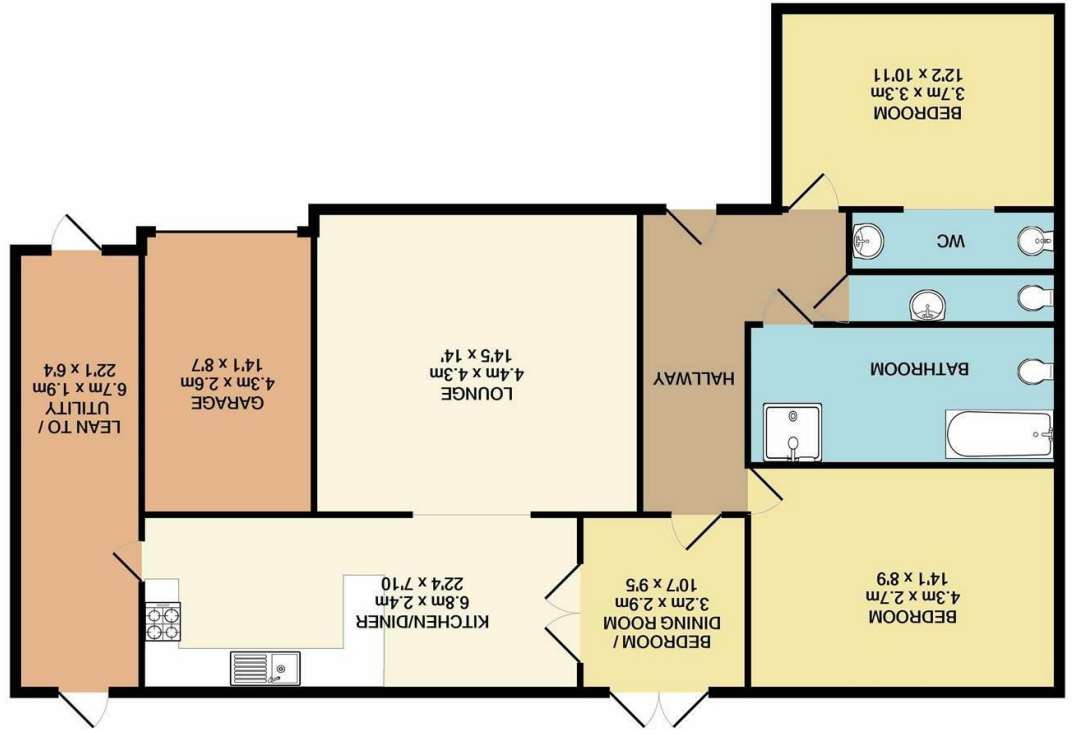


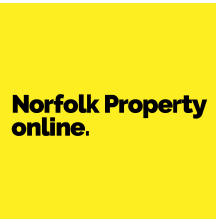
Whilst every attempt has been made to ensure the accuracy of the floor plan contained here, measurements of doors, windows, rooms and any other items are approximate and no responsibility is taken for any error, omission, or mis-statement. This plan is for illustrative purposes only and should be used as such by any prospective purchaser. The services, systems and appliances shown have not been tested and no guarantee as to their operability or efficiency can be given.
 Made with Metropix @2021



Disclaimer - In accordance with the Property Misdescriptions Act, the company gives notice that all descriptions, references to condition, necessary permissions for use and other details are given in good faith and believed to be correct, but any intending lessees do not rely on them as statements of fact, but must satisfy themselves by inspection or other means, as to their accuracy.

England & Wales	
EU Directive 2002/91/EC	
Very energy efficient - lower running costs	
A (92 plus)	Very energy efficient - lower running costs
B (81-91)	
C (69-80)	
D (55-68)	
E (39-54)	
F (21-38)	
G (1-20)	Not energy efficient - higher running costs
Current	Potential

Energy Efficiency Rating



Bellmere Way | Thetford | IP25
Guide price £340,000

Norfolk Property online presents this chain free detached bungalow. Occupying a generous plot within the popular village of Saham Toney, this home is an ideal opportunity for any buyer looking to enjoy village living. With a variety of amenities within the village, including a popular pub, primary school and church, this home also offers easy access to the nearby market town of Watton.

The accommodation on offer, comprises of an inviting entrance hall, generous lounge, kitchen diner, lean-to utility room, three bedrooms, cloakroom and family bathroom. With the additional benefit of a brick-built workshop, complete with power and light, this home also offers generous off road parking, adjoining garage and mature rear gardens backing woodland. This property also benefits from solar panels.

An internal viewing comes highly recommended to appreciate this opportunity.

Guide Price - £340,000 - £350,000

